


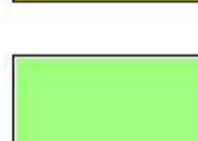
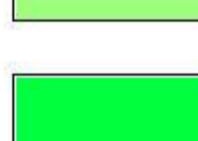

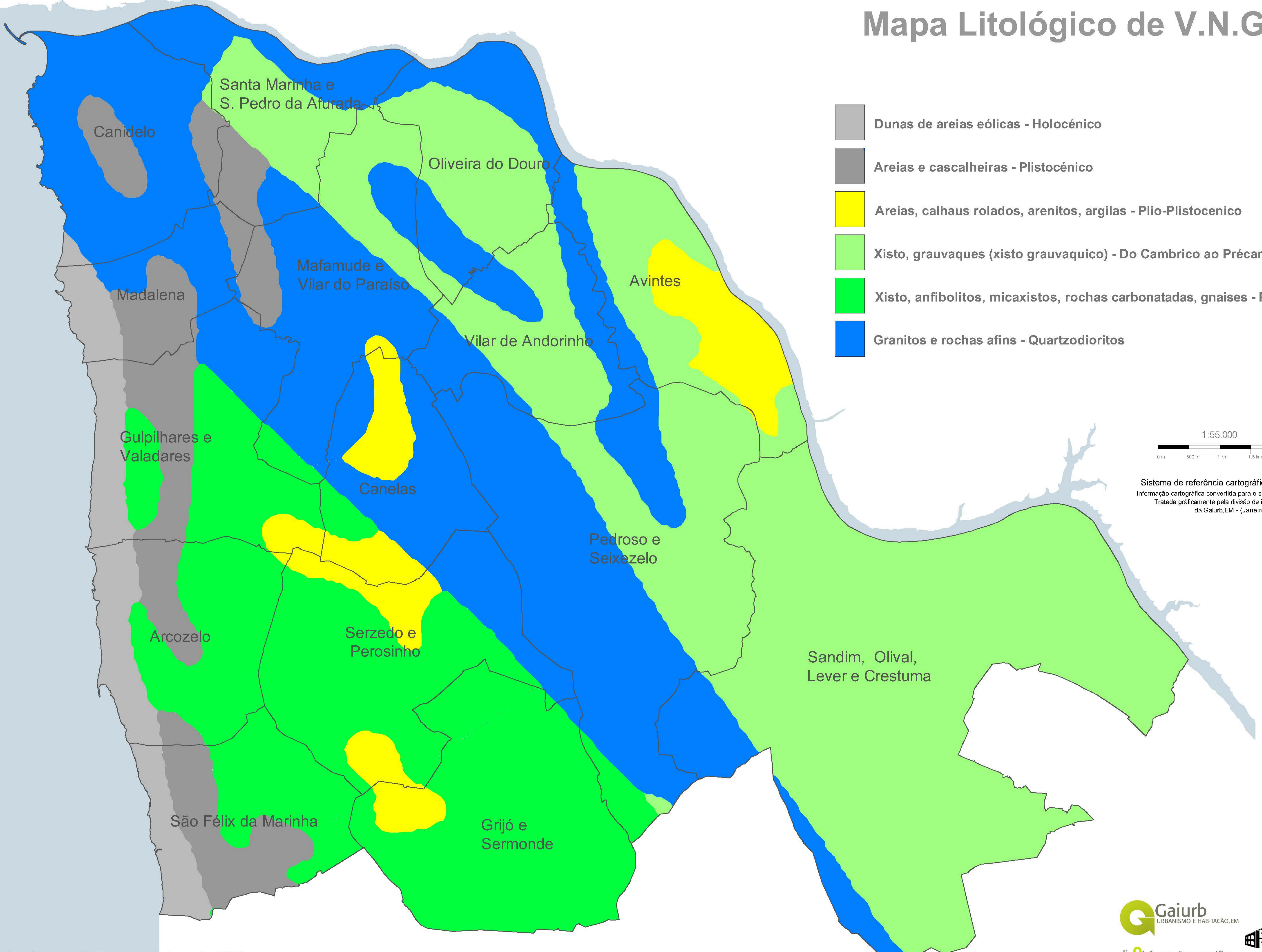


X:46703.4
Y:164527.0

Mapa Litológico de V.N.Gaia

-  Dunas de areias eólicas - Holocénico
-  Areias e cascalheiras - Plistocénico
-  Areias, calhaus rolados, arenitos, argilas - Plio-Plistocénico
-  Xisto, grauvaques (xisto grauvaquico) - Do Cambrio ao Précambrico
-  Xisto, anfibolitos, micaxistos, rochas carbonatadas, gnaises - Précambrico
-  Granitos e rochas afins - Quartzodioritos



Sistema de referência cartográfico: PT-TM06/ETRS89
Informação cartográfica convertida para o sistema cartográfico em vigor.
Tratada graficamente pela divisão de informação geográfica
da Gaiurb,EM - (Janeiro 2016)

Fonte: Atlas do Ambiente, Litologia de 1982

X:24352.5
Y:164527.5